

Network Cabinet Catalog



宝鹏
BAOPEN®

Stable Quality Safe Equipment

About Us



Ningbo Baopeng Electric Appliance Co., Ltd. is a professional manufacturer of cabinets and enclosures for networking, industrial automation, telecommunication, etc. The company is located in Zhangqi Guyao industrial zone, covers 12000 square meters working area, with advanced production line and inspection equipment.

Our products' feature stable, easy to assemble. The material is chosen from high quality SPCC cold rolled steel, and antirust phosphorous treatment, static painting technique, catnode electrophoresis priming craft can be selected to meet the requirement of high corrosion protection.

BaoPeng assures the excellent product quality based on scientific management, precise design, advanced equipments, skilled workers and efficient techniques. To provide you satisfactory solutions and economical price is the continuous pursuit of BaoPeng stuff.

NETWORK CABINET



Network cabinet

Model: 42U

Product size: 600*600*2000mm

Package size: 610*610*2020mm

Net Weight: 72.75kg

Gross Weight: 76.75kg

Description:

Surface finish: degreasing, phosphoric, powder coat

Material: SPCC cold rolled steel

High-density vented door

Exquisite design with precise dimension and craftsmanship

Advanced lock

Welded frame, strong structure

High-density vented front door and high-density double section rear doors enable ventilation and reliable operation

Adjustable side panel

2 panel with screws, 2 high-speed fans, one 8-position PDU, equipped with 30 sets of screws



Network cabinet

Model: 42USE

Product size: 600*800*2000mm

Package size: 610*810*2020mm

Net Weight: 86.5kg

Gross Weight: 90.5kg



Network cabinet

Model: 42USTW

Product size: 600*1200*2000mm

Package size: 610*1210*2020mm

Net Weight: 117.2kg

Gross Weight: 119.2kg



Network cabinet

Model: 32U

Product size: 600*600*1600mm

Package size: 610*610*1620mm

Net Weight: 62.25kg

Gross Weight: 65.25kg

NETWORK CABINET



Network cabinet

Model: 22U
Product size: 600*600*1200mm
Package size: 610*610*1220mm
Net Weight: 47.5kg
Gross Weight: 50kg



Network cabinet

Model: 18U
Product size: 600*600*1000mm
Package size: 610*610*1020mm
Net Weight: 43.3kg
Gross Weight: 44.8kg



Network cabinet

Model: 42UEE
Product size: 800*800*2000mm
Package size: 810*810*2020mm
Net Weight: 112.5kg
Gross Weight: 115kg

NETWORK CABINET ACCESSORIES



600 Fan frame



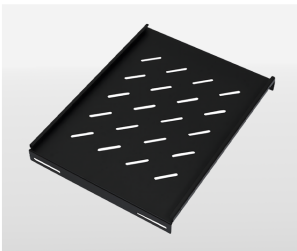
800 Fan frame



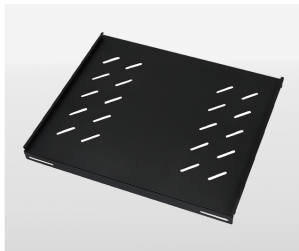
1000 Fan frame



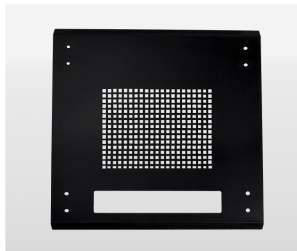
Cooling fan



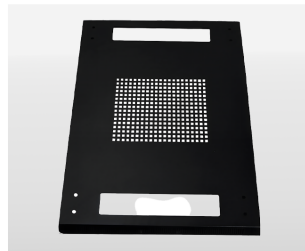
600 fixed shelf



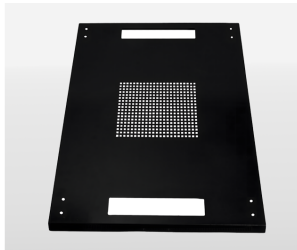
800 fixed shelf



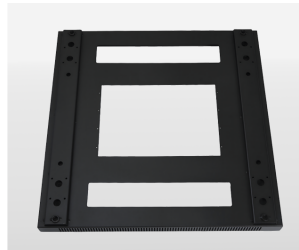
600 Base cap



800 Base cap



1200 Base cap



600 base



800 base



1200 base



Terminal box



Wheels



Lock



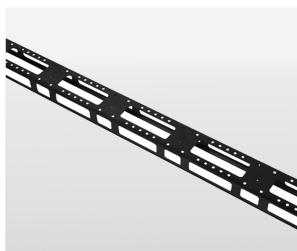
Screw pack



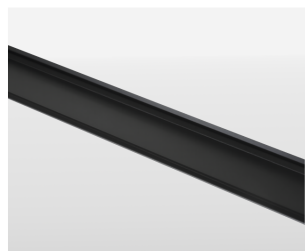
PDU socket



Cable management slot



Wire handling slot



Wire lining cover

Website

www.nbbaopeng.com

Contact us

No.118 Guyao Road, Zhangqi Town, Cixi City,
Zhejiang Province, 315313, China
info@nbbaopeng.com
+86 15921162693